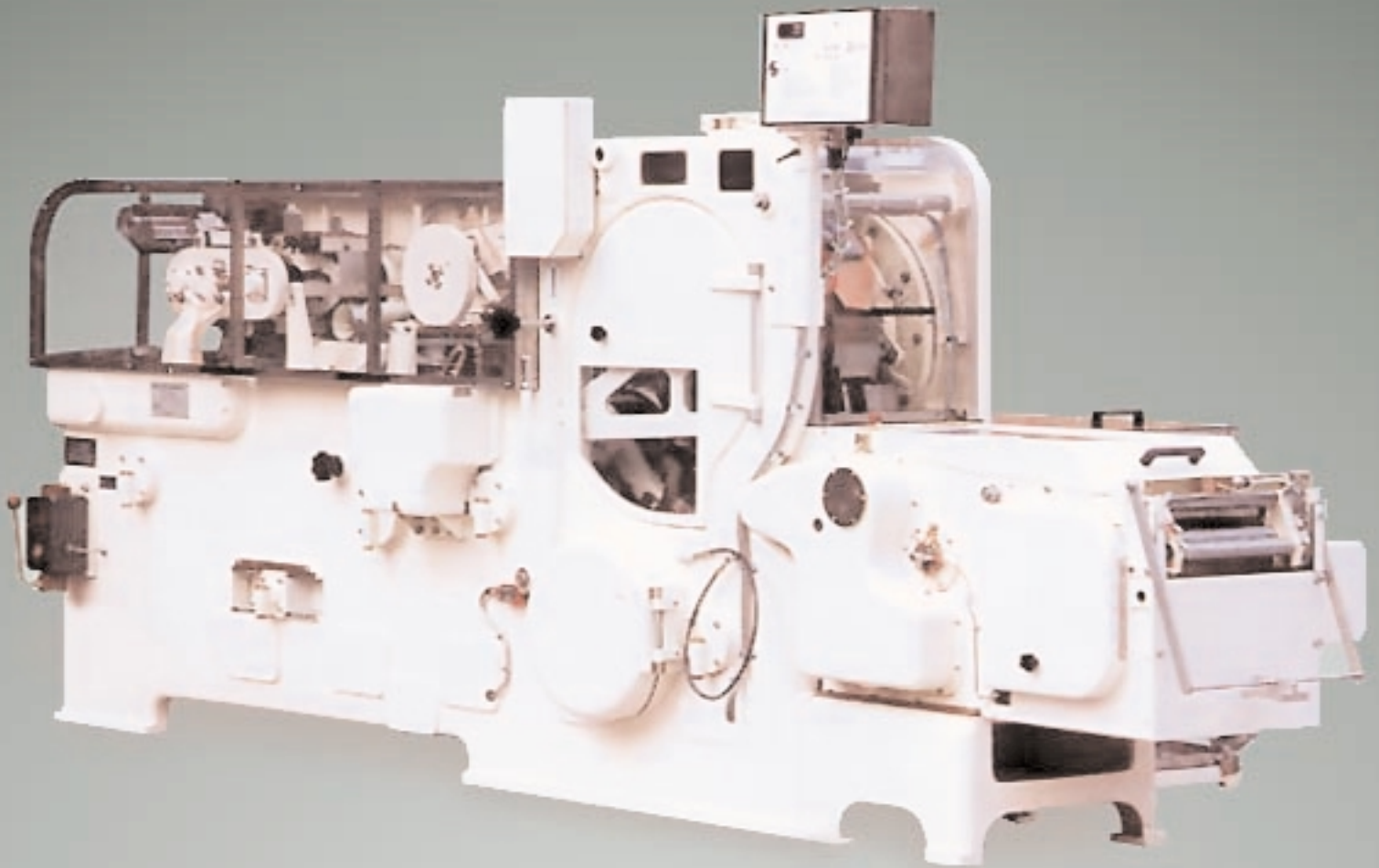


Chempac[®] MK IV

Continuous Motion High Output/End Fold Wrapping Machines



Continuous Motion for Higher Line Efficiency

The Chemtech continuous motion design principle results in a highly efficient packaging machine and significantly increases 'complete line efficiency' by maximising capacity at lowest cost.

Increased Production

The Chempac MK IV's high output of up to 220 packs per minute fully utilises product processing and modern casepacker capacities to attain greater 'line' outputs.

Excellent Weight Accuracy - Minimum 'Give Away'

Continuous motion design gives ideal product flow and therefore very high weight accuracy.

High Quality Brick - Maximum 'Customer Appeal'

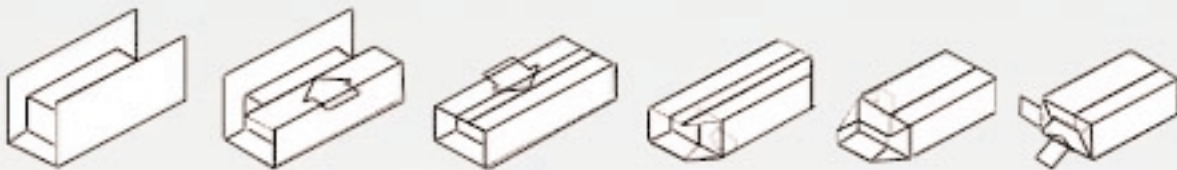
Gentle, continuous feeding of product to the moulding drum ensures that only high quality bricks of consistent texture and colour are produced.

Minimal Maintenance / Down-Time costs

Continuous motion results in quiet running and minimum wear. This, together with the automatic lubrication system, extends the periods between maintenance and minimises down-time costs.

End Folding for Lower Packaging Costs

The Chemtech 'end folding' system in general uses less wrapping material (up to 20%) than competitor's 'bottom fold' system. This can result in significant financial saving or extra profit to customers, particularly over a complete packing year.

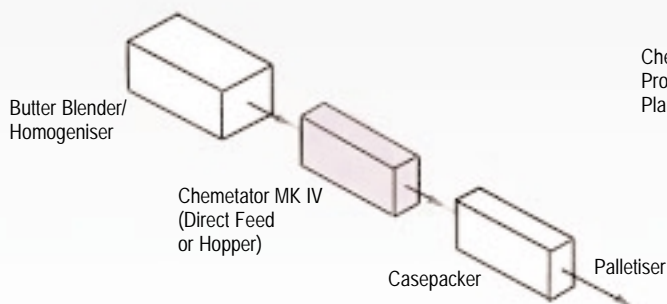


Applications

Chemtech machines are usually the 'key element' in the packaging line to maximise tonnage throughput and line efficiency.

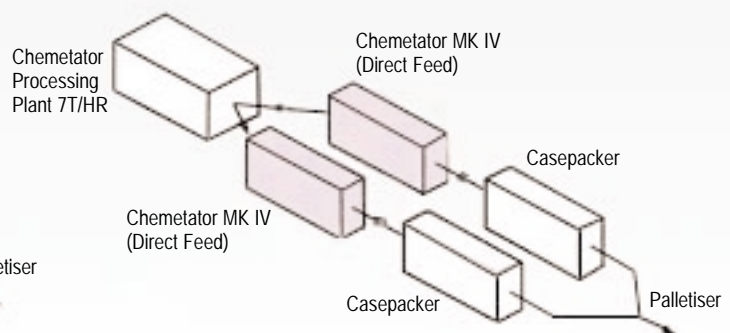
Typical Butter Line

e.g. 500g Packs - 51/2 Ton Output/Hour



Typical Margarine Line

e.g. 250g Packs - 6 Ton Output/Hour





Chemtech Offers

Complete Lines

Chemtech can supply complete lines as required by clients.

New Machines

Supplied and installed with 12 months guarantee.

Reconditioning Service

Chemtech will undertake part/full reconditioning work as per client's request.

Exchange Machines

'New' offer to existing Chemtech customers is the supply of exchange/fully reconditioned Chemtech machines with full 6 months guarantee.

Customer has substantial advantage of being able to use his existing Chemtech machine right up to delivery of the exchange machine!

Exchange Units

All the main modular parts such as Drum, Reel Feed, Jaw Units, etc., can be supplied as 'Exchange Units'. Often more cost effective than purchasing spare parts, because these units can be quickly installed with minimum downtime/production losses.

World wide supply of spare parts and service engineer visits

Specification

PRODUCTS

Margarine, edible fats, butter and products of similar consistency.

OUTPUT RANGE

100-220 bricks per minute.

BRICK

Single Chemtech standard brick weight range 100-500g (4-16oz).

WEIGHT ACCURACY

±0.2% with products of consistent density.

WRAPPER FEED

Continuous from reel with 'no paper' detector and positive automatic cut-out. Max reel diameter 460mm (18inches).

WRAPPER MATERIAL

Parchment and parchment lined aluminium foil.

REEL FEED REGISTER

By Photocell.

CODING

Ink print coding and pricing. 'Sauven' Ink coder is fitted as standard, 'Markem' or other coding units operating by detecting printed registration marks on wrapper can be supplied on request.

DIMENSIONS (includes Conveyor - 5'2³/₈" 1584mm).

Hopper Feed 19'3³/₄" x 5'10³/₄" x 6'7¹/₂" 5885 x 1797 x 2019 (mm).

Direct Feed 19'3³/₄" x 5'7³/₄" x 5'1¹/₂" 5885 x 1709 x 1571 (mm).

MAIN MOTOR

Hopper Feed 11 KW.

Direct Feed 7.5 KW.

TOTAL POWER REQUIREMENT

Hopper Feed 13.5 KW.

Direct Feed 8.5 KW.

PISTON RELIEF MECHANISM

Standard but essential for aerated products to allow for relief of pressure during moulding.

CONVEYORS

Standard machines fitted with parallel power driven belt conveyors delivering bricks side by side.

MATERIALS

Stainless Steel and stainless materials used extensively for maximum hygiene and corrosion resistance.

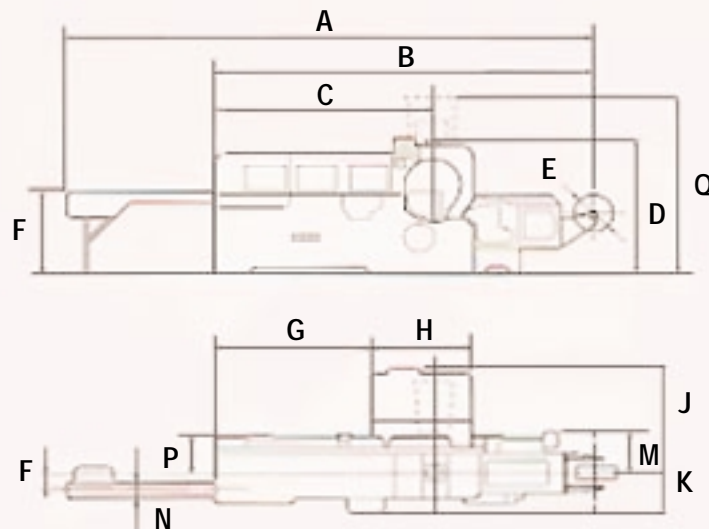
LUBRICATION

Bielomatic with major working parts immersed in oil baths.

WEIGHT

Hopper Feed 5500kg (12,300lb).

Direct Feed 4825kg (10,600lb).



	INCH	MM		INCH	MM		INCH	MM
A	19'3 ³ / ₄	5885	F	3-1	941	L	7	178
B	13 - 4 ³ / ₈	4074	G	5-5 ⁹ / ₁₆	1666	M	1-7	483
C	7-8 ⁷ / ₁₆	2348	H	3-6	1067	N	8	203
D	5-1 ⁷ / ₈	1571	J	4-1 ¹³ / ₁₆	1265	P	1-5 ³ / ₄	451
E	1-6	457	K	1-5 ¹ / ₂	444	Q*	6-7 ¹ / ₂	2019

*Hopper Machines Only

Chempac[®]

Automatic and Semi-Automatic Carton Fillers



Chemtech International Ltd is the world's leading supplier of systems for production of margarines, shortenings, bread improvers, bakery ingredients and cocoa/chocolate products. In addition to the well known Chemetator processing equipment, Chemtech designs and builds carton filling machines for 'bag-in-box' systems.

The custom built Chempac Carton Filler machines have capacities up to 10 tonnes/hr and are usually designed to fill cartons from 10 kg up to 25 kg. The machines are designed to meet individual customer's needs with single or multiple fill stations, manual or automatic carton indexing, manual or automatic tare, no-box no-fill sensing etc...

Chemtech can also offer, machines to erect cartons, to place plastic inserts into the cartons, to seal the cartons, metal detectors for the cartons and conveying systems.



For More Information Contact:

AIR PROCESS SYSTEMS & CONVEYORS CO., INC.

774 Burr Oak Drive

Westmont, Illinois 60559

Tel: 630.887.0700 800.822.0771

Fax: 630.887.0771

Web: <http://www.airprocesssystems.com>

E-mail: sales@airprocesssystems.com