



ROTARY AIRLOCK FEEDERS



MEDIUM DUTY SQUARE

MD SERIES MEDIUM DUTY DROP-THRU

FEATURES:

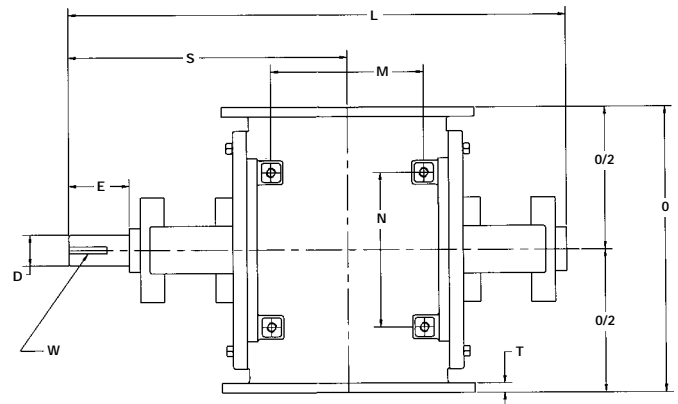
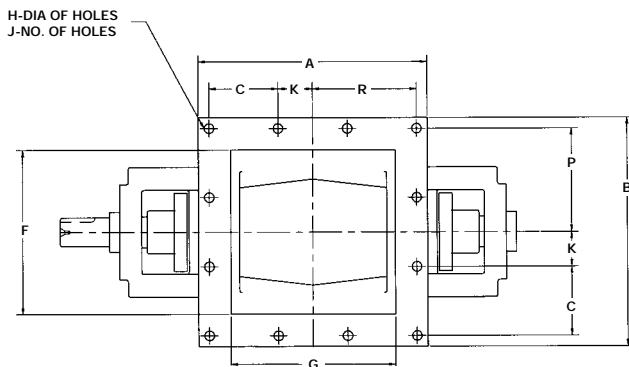
- Outboard bearings
- Multi-Seal™
- Round or square flange available
- Heavy duty oversized shaft
- Pressure differentials to 8 PSI
- Housing: cast iron
- Rotor: 8 vane, open end bevel

BENEFITS:

- Superior seal design for prolonged life
- Select from four sizes to fit most applications
- Suitable for all dust collection applications
- Operating temperatures to 400°F
- Used in positive pressure pneumatic conveying systems

INDUSTRIES WHERE USED:

- Plastic
- Mining
- Chemical
- Baking
- Food
- Cement
- Asphalt
- Paint



Dimensions (In Inches)

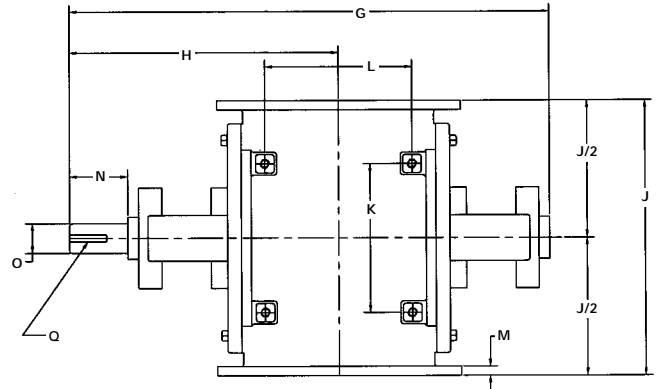
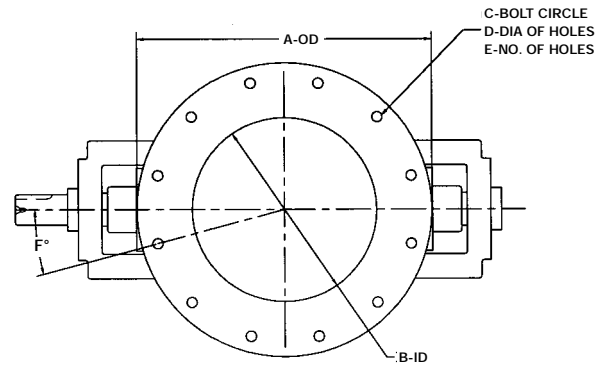
MEDIUM DUTY, SQUARE FLANGE, DROP THRU SERIES

SIZE	CFR	A	B	C	D	E	F	G	H	J*	K	L	M	N	O	P	R	S	T	W†	X
8 x 8	.17	11	11	-	13/8	2 1/2	7 1/2	7 1/2	7/16	8	2 1/2	21 1/2	6	7 1/4	12	4 7/8	4 7/8	12 1/4	1/2	5/16 x 5/32 x 2	3/8-16
10 x 10	.34	13 3/4	13 1/4	4	1 5/8	2 1/2	9 1/2	9 1/2	9/16	12	2	26 1/4	8	8 1/8	15	6	6	14 5/8	1/2	3/8 x 3/16 x 2	1/2-13
12 x 12	.61	16 1/4	16 1/4	4 7/8	2	3 1/2	11 1/4	11 1/4	9/16	12	2 7/16	33 3/4	9 3/4	10 1/2	18 1/4	7 5/16	7 5/16	18 7/8	5/8	1/2 x 1/4 x 3	1/2-13
14 x 14	1.01	19	19	4 1/4	2 3/16	4	14	14	9/16	16	4 1/4	38	12	9 1/4	21	8 1/2	8 1/2	21 3/8	5/8	1/2 x 1/4 x 4	1/2-13

*No. of holes in flange. Note: No holes in corners on 8 x 8. Only 2 on each side straddling center line. †Key way in shaft - width x depth x length.



MEDIUM DUTY ROUND



Dimensions (In Inches)

MEDIUM DUTY, ROUND FLANGE, DROP THRU SERIES

SIZE	CFR	A	B	C	D	E	F	G	H	J	K	L	M	N	O	P	Q
8 x 8	.17	13 ¹ / ₂	8	11 ³ / ₄	9 ¹ / ₁₆	8	22 ¹ / ₂ °	21 ¹ / ₂	12 ¹ / ₄	12	7 ¹ / ₄	6	1/2	2 ¹ / ₂	1 ³ / ₈	3/8-16	5 ¹ / ₁₆ x 5 ³ / ₃₂ x 2
10 x 10	.34	16	10	14 ¹ / ₄	11 ¹ / ₁₆	12	15°	26 ¹ / ₄	14 ⁵ / ₈	15	8 ¹ / ₈	8	1/2	2 ¹ / ₂	1 ⁵ / ₈	1/2-13	3/8 x 3 ¹ / ₁₆ x 2
12 x 12	.61	19	12	17	11 ¹ / ₁₆	12	15°	33 ³ / ₄	18 ⁷ / ₈	18 ¹ / ₄	10 ¹ / ₂	9 ³ / ₄	5/8	3 ¹ / ₂	2	1/2-13	1/2 x 1 ¹ / ₄ x 3
14 x 14	1.01	21	14	18 ³ / ₄	7 ⁷ / ₈	12	15°	38	21 ³ / ₈	21	9 ¹ / ₄	12	5/8	4	2 ³ / ₁₆	1/2-13	1/2 x 1 ¹ / ₄ x 4



Wm. W. Meyer & Sons, Inc.

8261 Elmwood Ave. P.O. Box 105
 Skokie, Illinois 60077
 Phones: 847-673-0312 • FAX: 847-673-5564
 website: <http://www.wwmeyer.com>

YOUR LOCAL REPRESENTATIVE