



ROTARY AIRLOCK FEEDERS



STANDARD DUTY ROUND

SD SERIES STANDARD DUTY DROP-THRU

FEATURES:

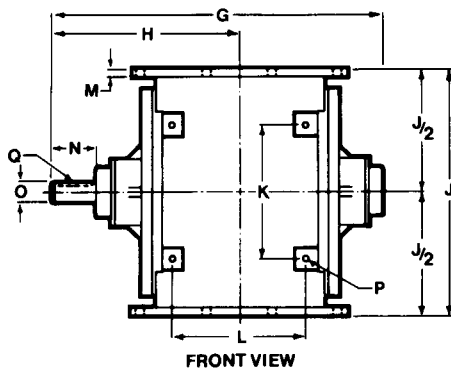
- Round or square flange
- Temperatures to 250°F
- Rugged castings
- Larger shaft diameters than competition
- Pressure differentials to 15PSI
- Cast iron, 304SS, 316SS Ni-Hard

BENEFITS:

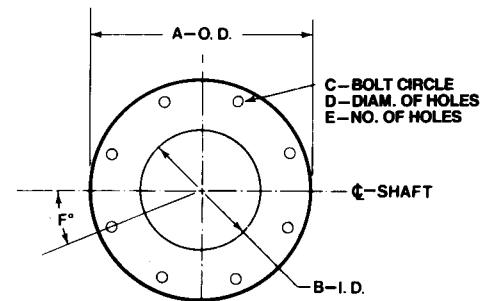
- Up to fourteen sizes to fit the application
- Design exceeds requirements for most dust collection applications
- Reduces deflection for maximum torque

INDUSTRIES WHERE USED:

- Wood
- Paper
- Grain
- Tobacco
- Food
- Rubber
- Textile
- Paint



FRONT VIEW

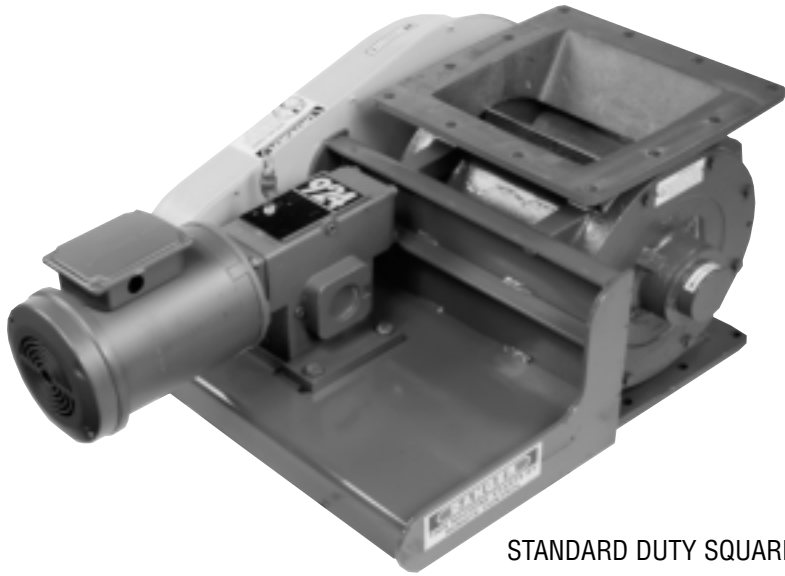


FLANGE DIMENSIONS
TOP AND BOTTOM

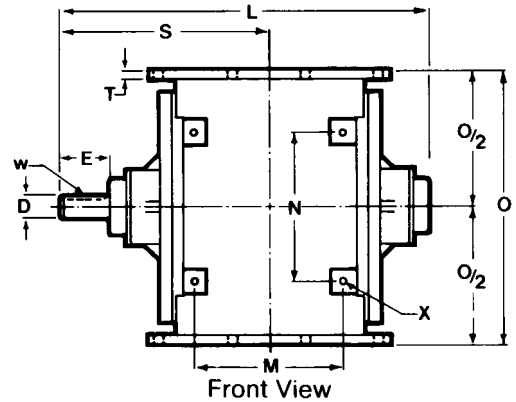
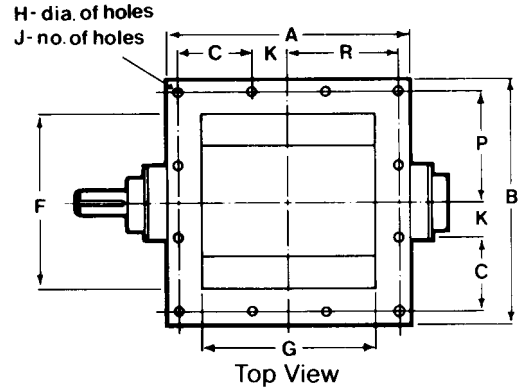
Dimensions (In Inches)

STANDARD DUTY, ROUND FLANGE, DROP-THRU SERIES

SIZE	A	B	C	D	E	F	G	H	J	K	L	M	N	O	P	Q
6 x 6	11	6	9 ¹ / ₂	9 ¹ / ₁₆	8	22 ¹ / ₂ °	14 ¹ / ₄	8 ³ / ₈	10	5 ⁵ / ₈	4 ⁵ / ₁₆	3 ³ / ₈	2 ¹ / ₂	1	3 ³ / ₈ -16	1 ¹ / ₄ x 1 ¹ / ₈ x 2
8 x 8	13 ¹ / ₂	8	11 ³ / ₄	9 ¹ / ₁₆	8	22 ¹ / ₂ °	16 ¹ / ₄	9 ³ / ₈	12	7 ¹ / ₄	6	1 ¹ / ₂	2 ¹ / ₂	1	3 ³ / ₈ -16	1 ¹ / ₄ x 1 ¹ / ₈ x 2
10 x 10	16	10	14 ¹ / ₄	11 ¹ / ₁₆	12	15°	19 ¹ / ₄	10 ⁷ / ₈	15	8 ¹ / ₈	8	1 ¹ / ₂	2 ¹ / ₂	1 ¹ / ₄	1 ¹ / ₂ -13	1 ¹ / ₄ x 1 ¹ / ₈ x 2 ¹ / ₂
12 x 12	19	12	17	11 ¹ / ₁₆	12	15°	22 ³ / ₄	13 ¹ / ₄	18 ¹ / ₄	10 ¹ / ₂	9 ³ / ₄	5 ⁵ / ₈	3 ³ / ₄	1 ¹ / ₂	1 ¹ / ₂ -13	3 ³ / ₈ x 3 ³ / ₁₆ x 3
14 x 14	21	14	18 ³ / ₄	7 ⁷ / ₈	12	15°	28 ³ / ₄	16 ³ / ₈	21	9 ¹ / ₄	12	5 ⁵ / ₈	4	2 ¹ / ₂	1 ¹ / ₂ -13	5 ⁵ / ₈ x 5 ⁵ / ₁₆ x 4
16 x 16	23 ¹ / ₂	16	21 ¹ / ₄	1 ¹ / ₈	16	11 ¹ / ₄ °	30 ³ / ₄	17 ³ / ₈	24	12	14	5 ⁵ / ₈	4	2 ¹ / ₂	1 ¹ / ₂ -13	5 ⁵ / ₈ x 5 ⁵ / ₁₆ x 4



STANDARD DUTY SQUARE



Dimensions (In Inches)

STANDARD DUTY, SQUARE FLANGE, DROP-THRU SERIES

SIZE	A	B	C	D	E	F	G	H	J*	K	L	M	N	O	P	R	S	T	W†	X
4 x 4	5 ¹ / ₂	5 ¹ / ₂	—	3/4	2 ¹ / ₂	3 ¹ / ₂	3 ¹ / ₂	5/16	8	1 ¹ / ₄	10 ⁵ / ₈	2 ⁵ / ₁₆	4 ¹³ / ₁₆	7 ³ / ₄	2 ³ / ₈	2 ³ / ₈	6 ⁹ / ₁₆	1/4	3/16 X 3/32 X 2	5/16 - 18
6 x 6	8	8	—	1	2 ¹ / ₂	5 ¹ / ₂	5 ¹ / ₂	7/16	8	1 ⁷ / ₈	14 ¹ / ₄	4 ⁵ / ₁₆	5 ⁵ / ₈	10	3 ⁵ / ₈	3 ⁵ / ₈	8 ³ / ₈	3/8	1/4 X 1/8 X 2	3/8 - 16
8 x 8	11	11	—	1	2 ¹ / ₂	7 ¹ / ₂	7 ¹ / ₂	7/16	8	2 ¹ / ₂	16 ¹ / ₄	6	7 ¹ / ₄	12	4 ⁷ / ₈	4 ⁷ / ₈	9 ³ / ₈	1/2	1/4 X 1/8 X 2	3/8 - 16
10 x 10	13 ¹ / ₄	13 ¹ / ₄	4	1 ¹ / ₄	2 ¹ / ₂	9 ¹ / ₂	9 ¹ / ₂	9/16	12	2	19 ¹ / ₄	8	8 ¹ / ₈	15	6	6	10 ⁷ / ₈	1/2	1/4 X 1/8 X 2 ¹ / ₂	1/2 - 13
12 x 12	16 ¹ / ₄	16 ¹ / ₄	4 ⁷ / ₈	1 ¹ / ₂	3 ³ / ₄	11 ¹ / ₄	11 ¹ / ₄	9/16	12	2 ⁷ / ₁₆	22 ³ / ₄	9 ³ / ₄	10 ¹ / ₂	18 ¹ / ₄	7 ⁵ / ₁₆	7 ⁵ / ₁₆	13 ¹ / ₄	5/8	3/8 X 3/16 X 3	1/2 - 13
12 x 21	25	16	4 ³ / ₄	1 ¹ / ₂	3 ¹ / ₂	11	20	9/16	16	2 ³ / ₈	31 ¹ / ₂	11	10 ¹ / ₂	15	7 ¹ / ₈	11 ⁷ / ₈	17 ¹ / ₂	5/8	3/8 X 3/16 X 3	1/2 - 13
14 x 14	19	19	4 ¹ / ₄	2 ¹ / ₂	4	14	14	9/16	16	4 ¹ / ₄	28 ³ / ₄	12	9 ¹ / ₄	21	8 ¹ / ₂	8 ¹ / ₂	16 ³ / ₈	5/8	5/8 X 5/16 X 4	1/2 - 13
16 x 16	22	22	5	2 ¹ / ₂	4	16	16	9/16	16	5	30 ³ / ₄	14	12	24	10	10	17 ³ / ₈	5/8	5/8 X 5/16 X 4	1/2 - 13
18 x 18‡	24	24	5 ¹ / ₄	2 ¹ / ₂	4	18	18	11/16	16	5 ¹ / ₄	32 ³ / ₄	16	12	27	10 ¹ / ₂	10 ¹ / ₂	18 ³ / ₈	1	5/8 X 5/16 X 4	1/2 - 13
22 x 22‡	28	28	5	2 ¹ / ₂	4	22	22	11/16	20	2 ¹ / ₂	36 ³ / ₄	20	12	31	12 ¹ / ₂	12 ¹ / ₂	20 ³ / ₈	1	5/8 X 5/16 X 4	1/2 - 13

*No. of holes in flange. Note: No holes in corners on 4 x 4, 6 x 6 or 8 x 8. Only 2 on each side straddling center line. † Ket way in shaft—width x depth x length. ‡ Consult factory.

*Dimensions not for construction purposes.



Wm. W. Meyer & Sons, Inc.

8261 Elmwood Ave. P.O. Box 105

Skokie, Illinois 60077

Phones: 800-963-4458 • 847-673-0312

FAX: 847-673-5564

website: <http://www.wmwmeyer.com>

YOUR LOCAL REPRESENTATIVE